



L.M.I. Newsletter

Labour Market Information

LOCAL FIRST NATIONS PEOPLE IN CANADA:

2.1 A FIRST NATIONS LOOK AT FOUR GEOGRAPHIC AREAS.

Data in this edition studied four Census Metropolitan Areas (CMAs) to analyze demographics and labour market information data. These areas were chosen for their location in relation to Six Nations.

2.2 MORE FIRST NATIONS RESIDE IN THE BRANTFORD CMA

First Nations People in the Brantford Census Metropolitan Area (CMA) account for 92.6% of the Aboriginal identity population. Followed by Hamilton at 74.7% (8,945); London has 73.1% (6,195); St. Catharines/Niagara Falls at 61.8% (5,465).

2.3 CHANGES IN SOME AGE GROUPS DOWN FROM 2003 TO 2013

There were four age groups in the Six Nations Band Membership which had negative growth between 2003 and 2013:

- Age group 5-9 years old (-3.9%);
- Age group 10-14 years old (-0.5%);
- As well as age group 35-39 years old (-4.1%);
- Age Group 40-44 years old (-4.3%).

Feature

Workforce Characteristics - Local First Nations

The Aboriginal population of Canada is growing and the surge of older people retiring is expected to increase. Six Nations

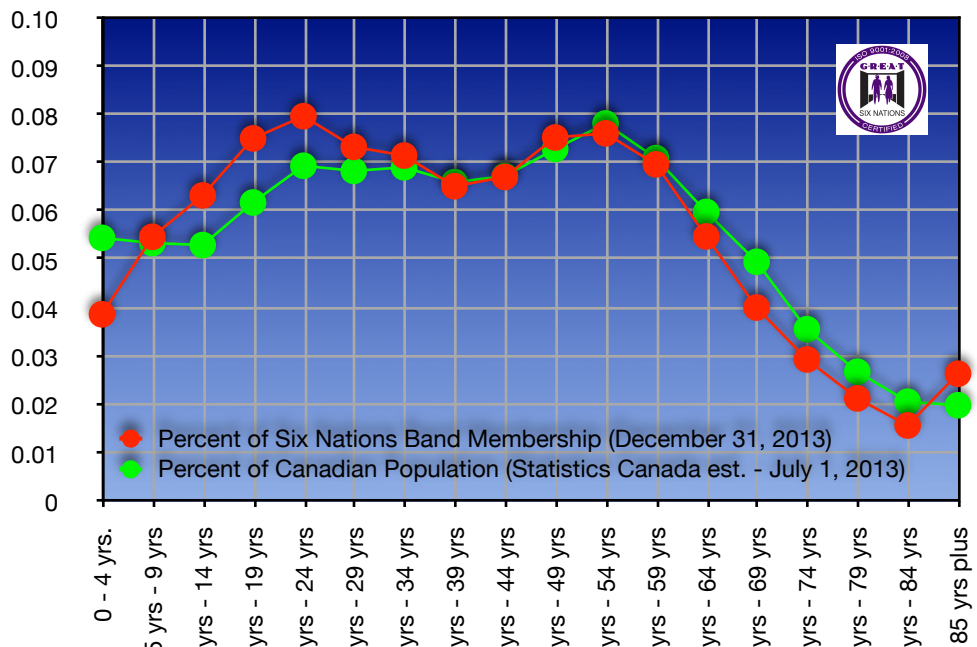
is also affected by this phenomenon as data from Six Nations membership suggests.

Table: 1

Geography	First Nations	Aboriginal Identity Population
Brantford CMA	10,300	11,120
Hamilton CMA	8,945	11,980
St. Catharines/Niagara Falls CMA	5,465	8,850
London CMA	6,195	8,475
<i>Six Nations Band Membership On Reserve (as of December 31, 2011)</i>	<i>12,025ⁱ</i>	NA
<i>Six Nations Band Membership Off Reserve (as of December 31, 2011)</i>	<i>12,360ⁱ</i>	NA

Figure: 1

Percent Distribution Six Nations Membership (2013) and Canada by Age Groups



ⁱ Due to limited 2011 NHS demographics on Six Nations, the band membership data is used.

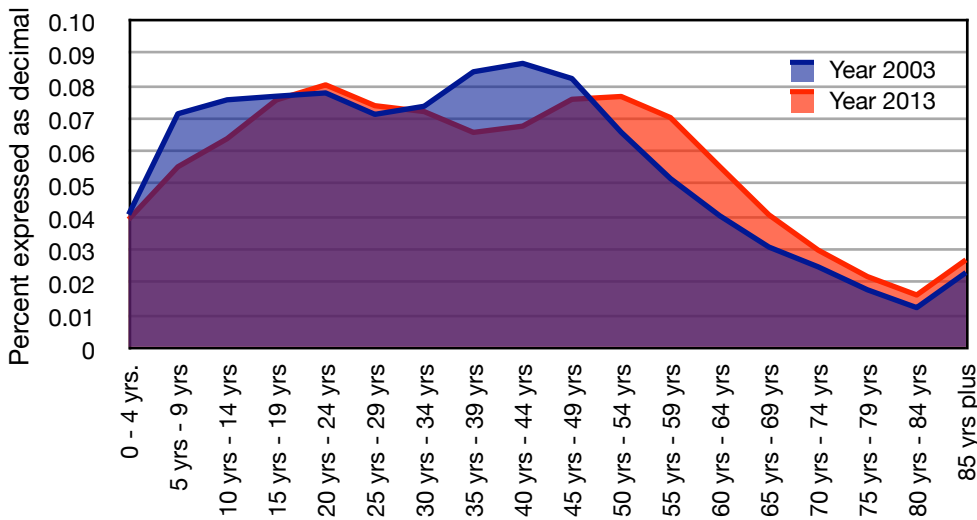
Monthly Labour Force Information for Reference Week of July 13 to 19, 2014

	Canada	Ontario	Brantford CMA	Hamilton CMA	St.Catharines/Niagara CMA
Participation Rate	66.1% -	66.1% ↑	66.5% ↓	65.0% ↑	61.4% ↓
Unemployment Rate	7.0% ↓	7.5% -	6.6% ↓	6.9% ↓	7.9% -
Employment Rate	61.4% -	61.2% ↑	62.1% ↓	60.6% ↑	56.6% ↓

Source: Statistics Canada, Labour Force Survey, released August 8, 2014

Figure: 2

Six Nations Membership 2001 and 2013 - Percent Distribution



The above chart shows the change in age distribution for Six Nations Membership (On & Off reserve).

The age demographics in 2003 are represented in blue and the demographics for 2009 are represented in red (the purple is the overlap between the two years).

Notice that there is an increase in the number of people 50 and over. This large section represents the aging Baby Boomers. The amount of older demographics is increasing slightly which could be a good sign that Six Nations People are living longer lives than previously.

There is also a drop in the under 20 year old grouping, although the distribution of this young group is still higher than the non-aboriginal population distribution of Canada. (see Figure: 1)

Table: 3

Labour Force Characteristics	Brantford	Hamilton	St. Catharines/ Niagara Falls	London
Participation rate of Aboriginal identity population	53.3%	63.4%	58.2%	63.8%
Unemployment rate of Aboriginal identity population	17.6%	10.0%	14.0%	20.8%
Employment rate of Aboriginal identity population	43.9%	57.1%	50.1%	50.5%

Labour force characteristics for the local area shown in Table: 3 above shows four local areas for which data is available. Hamilton has the lowest unemployment rate (10.0%) and highest employment rate (57.1%) as well as a high participation rate (63.4%). London has the highest unemployment rate (20.8%) as more Aboriginal people are participating in the labour market (looking for work).

ABOUT THE DATA

What the Symbols represent:

- Increase good = ↑ Bad = ↓
- Decrease good = ↓ Bad = ↑
- No change = -

The data in Table: 3 comes from the 2011 National Household Survey. This is the latest data available and it is collected every five years. The information in the table is at the most detailed level available. Sub-groups under Aboriginal identity, such as First Nations, is not available at this time.

Data was sourced from: Statistics Canada, 2011 National Household Survey; Statistics Canada 2012 Aboriginal Peoples Survey; Six Nations Elected Council, Six Nations Band Membership.

MAKING IT BETTER

If you have a questions about the information provided in this newsletter or if you would like to know more about a specific topic, please email to paul@greatsn.com

CONTACT INFORMATION

Paul McNaughton
Labour Market Analyst
paul@greatsn.com

Grand River Employment And Training
16 Sunrise Court, PO Box 69
Ohsweken, Ontario, CANADA
http://www.greatsn.com
1.888.218.8230 or 519.445.2222

Elvera Garlow
Executive Director,
elvera@greatsn.com